

Woosim WLAN Device Setting Guide

Revision 2.2
August 2024



This document describes how to use the "Woosim WLAN Manager" program.

Users need to know how the printer is connected to PC. Woosim RX Font Setting Utility supports serial, USB and Wi-Fi connection. If you want to know the printer configurations, run Self-Test routine. To run Self-Test, turn on the power of the printer while holding down <FEED> button.

If user computer has only USB port and the printer supports serial connection, USB-Serial convert cable is required. The exclusive driver may be needed for the convert cable. The convert cable is not included in the standard accessory set.

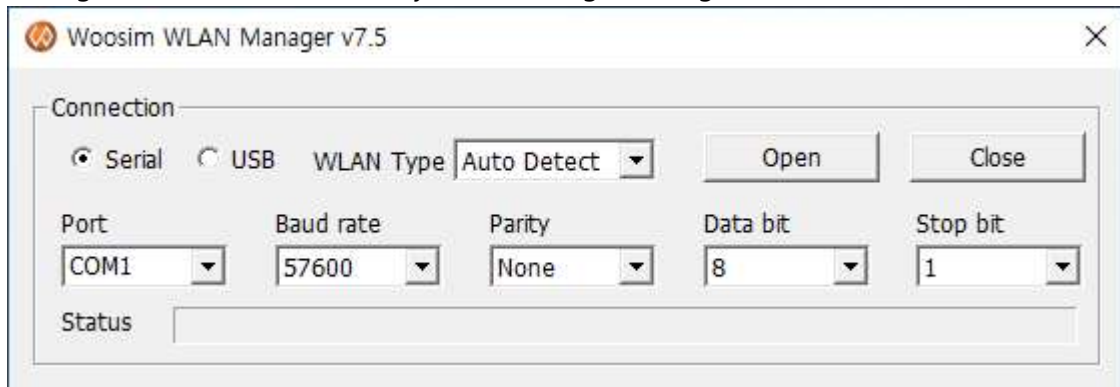
In case the printer supports USB connection, specific driver or software is not required.

Printer Connection

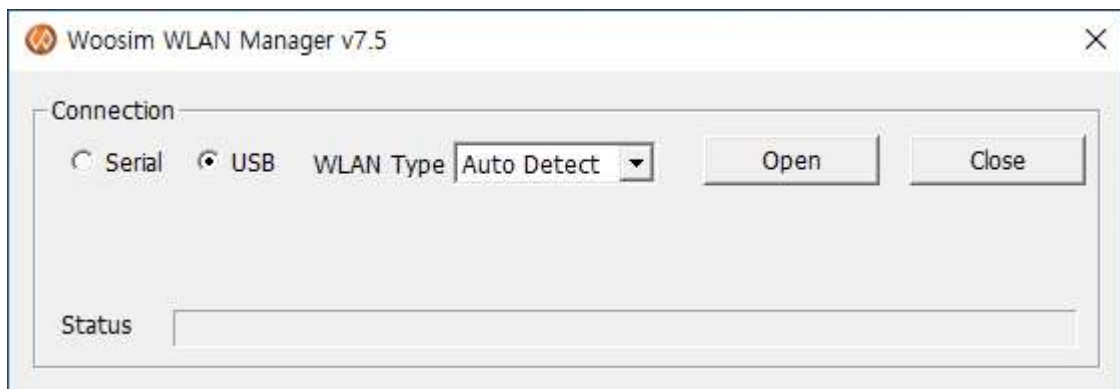
- 1) Turn on the power of a printer.
- 2) Connect a cable between printer and computer.
- 3) Run "Woosim WLAN Manager" program and select connection type.

A. Serial

Setting values for Baud rate, Parity, etc. can be got through Self-Test.



B. USB



- 4) Select WLAN Type.
If you do not know the type of Wi-Fi module installed in the printer, select <**Auto Detect**>.
If you want to specify the type of Wi-Fi module installed in the printer, you can select <**Type I**> or <**Type T**>.
- 5) Click the <**Open**> button. If the connection is successful, a settings window will be displayed according to the WLAN Type.

WLAN Type I

- 1) Click the <**Read WLAN Info**> button to retrieve the printer Wi-Fi module settings.

Woosim WLAN Manager v7.5

WLAN Information

Printer Status: Read Success

Version: 4185

MAC Address: 84:72:07:3e:1b:6c

Read WLAN Info

Save WLAN Info

WLAN Basic Setting

WLAN Mode: Infrastructure mode

SSID: WOOSIM

Key: woosim3702 ASCII

Operating Mode: Auto

Port: 9100

Channel: 1

Region: KR - Republic of Korea

Infrastructure Mode

☒ DHCP

IP: 0 . 0 . 0 . 0

NetMask: 0 . 0 . 0 . 0

Gateway: 0 . 0 . 0 . 0

DNS: 0 . 0 . 0 . 0

Access Point Mode

IP: 192 . 168 . 10 . 1

NetMask: 255 . 255 . 255 . 0

Gateway: 192 . 168 . 10 . 1

WLAN Security Setting

☐ None ☐ WEP ☒ WPA

WEP

WEP key: WEP-64bits

☒ Key1 ☐ Key2 ☐ Key3 ☐ Key4

WPA

Encryption: WPA2 PSK

Cipher: AES

2) Set the values of the items that need to be modified.

- **WLAN Basic Setting**

WLAN Mode	Network type to connect <ul style="list-style-type: none"> - Infrastructure mode : wireless connection through AP device - Access Point mode : the printer works as an AP device
SSID	Access Point service ID (max 32 bytes)
Key	Security password key <ul style="list-style-type: none"> - None : password disabled - WEP 64 bits : 5 bytes fixed length password - WEP 128 bits : 13 bytes fixed length password - WPA : 8 ~ 63 bytes variable length password
Port	Local port number. Default 9100
Operating Mode	2.4GHz / 5GHz / AUTO
Channel	WLAN channel. Activated in Access Point mode
Region	WLAN country code

- **Infrastructure Mode**

DHCP	Assign a printer IP address via DHCP
IP Address	Printer IP address
NetMask	Subnet Mask
Gateway	Gateway IP address
DNS	DNS IP address

- **Access Point Mode**

IP Address	Printer IP address
NetMask	Subnet Mask
Gateway	Gateway IP address

- **WLAN Security Setting**

Security Type	None / WEP / WPA
WEP	64bits / 128bits password length and Key1 ~ Key4 storage slot
WPA	Encryption method WPA / WPA2 and TKIP / AES

3) Click the <**Save WLAN Info**> button to save the Wi-Fi module settings to the printer.

WLAN Type T

- 1) Click the <**Read WLAN Info**> button to retrieve the printer Wi-Fi module settings.

Woosim WLAN Manager v7.5

WLAN Information

Printer Status: Read Success

Version: G0824A12

MAC Address: AC-3F-A4-69-85-AA

Read WLAN Info

Save WLAN Info

WLAN Basic Setting

WLAN Mode: Infrastructure mode

SSID: WOOSIM

Port: 1470

Region: KR:Republic of Korea

Infrastructure Mode

☒ DHCP

IP: 0 . 0 . 0 . 0

NetMask: 0 . 0 . 0 . 0

Gateway: 0 . 0 . 0 . 0

DNS: 0 . 0 . 0 . 0

Access Point Mode

IP Address : 192.168.10.1 (fixed)

IP Address: 192 . 168 . 10 . 1

☐ mDNS

Host Name: HostName

WLAN Security Setting

☐ None ☐ WEP (Open/Shared) ☐ WPA-PSK ☒ WPA2-PSK ☐ WPA WPA2-PSK

WEP Type: WEP-128bits

Data Type: ASCII

Key: woosimkey

ASCII : WEP-64bit : 5 characters(fixed) / WEP-128bit : 13 characters(fixed) / WPA-PSK, WPA2-PSK : 8 ~ 63 characters

2) Set the values of the items that need to be modified.

- **WLAN Basic Setting**

WLAN Mode	Network type to connect <ul style="list-style-type: none"> - Infrastructure mode : wireless connection through AP device - Access Point mode : the printer works as an AP device
SSID	Access Point service ID (max 32 bytes)
Port	Local port number. Default 1470
Region	WLAN country code

- **Infrastructure Mode**

DHCP	Assign a printer IP address via DHCP
IP Address	Printer IP address
NetMask	Subnet Mask
Gateway	Gateway IP address
DNS	DNS IP address

- **Access Point Mode**

IP Address	Printer IP address. 192.168.10.1 fixed
mDNS	multicast Domain Name System
	Check if you want to assign host name for the device.
Host Name	Assigned unique device name in the connected network (max 32 bytes)

- **WLAN Security Setting**

Security Type	None / WEP / WPA / WPA2 / WPA WPA2
WEP Type	WEP Password length (64bits / 128bits)
Data Type	Password input method (ASCII / HEX)
Key	Security password key <ul style="list-style-type: none"> - None : password disabled - WEP 64 bits : 5 bytes fixed length password - WEP 128 bits : 13 bytes fixed length password - WPA : 8 ~ 63 bytes variable length password

3) Click the <**Save WLAN Info**> button to save the Wi-Fi module settings to the printer.